

MecMast

The **MecMast** is the NEW mechanical telescopic mast driven by an electrical motor.

The MecMast provides an excellent solution for specially designed antennas, cameras and other specific equipment used for Communications and Surveillance. The main features of the mast are sturdiness and extending precision, which enables consistent accuracy of the extended height.

The exact position is controlled by an encoder and the desired height can be pre-set using a PC or other device.

The mast requires no guying and can support heavy top loads.

Equipped with manual safety backup system.



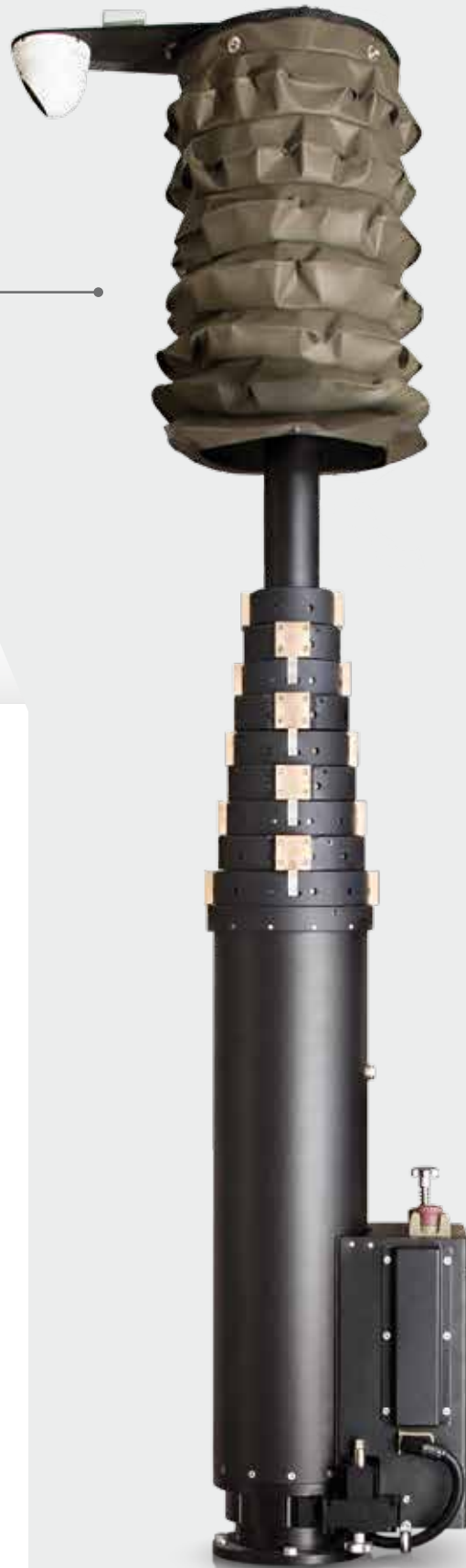
MECMAST

The Mechanical Telescopic Mast

The green bellow
is optional

FEATURES

- **Head loads** up to 250 kg
- **Extended Heights** up to 20mt
- Programmable **height extension**
- Locked height position
- Usable during operation and while driving
- **Extension speed:**
1m / 12 sec.



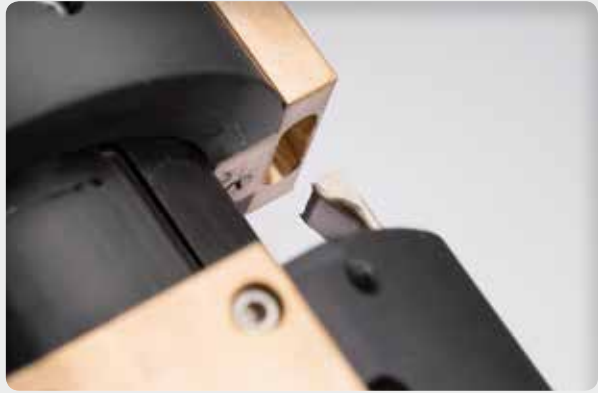
MECMAST DETAILS

1



ANTI-ROTATION KEY

2



LOCKINGS

3



GREASING HOLE

4



MIL-STD CONNECTORS

5



EMERGENCY STOP

6



MANUAL BACKUP

SPECIAL MAST SYSTEMS

MECMAST FEATURES

PLUS

NEW MECMAST FEATURES



- +** **>** THE WIDEST RANGE OF ELECTRO-MECHANICAL MASTS SUITING REAL CUSTOMER NEEDS

- +** **>** HIGH OPERATIVE PRECISION AND MINIMAL WIND DISPLACEMENT

- +** **>** AVAILABLE FROM 3 TO 11 SECTIONS TO MATCH DESIRED DIMENSIONS

- +** **>** IMPRESSIVE LIFTING STRENGTH

- +** **>** LIGHT ALLOY CONSTRUCTION FOR MINIMAL IMPACT ON STRUCTURES

- +** **>** SAFE USE FOR OPERATOR AND MOUNTED DEVICE

- +** **>** THE LOWEST NEEDED MAINTENANCE COMPARED TO SIMILAR PRODUCTS

- +** **>** LIMITED POWER REQUIREMENTS

- +** **>** MIL-STD-810 COMPLIANT

MECMAST**The Mechanical Telescopic Mast****AVAILABLE MODELS****Base Tube Ø127**

4 sections	Model	Dimensions mm		Top tube Ø mm	Payload kg
		Retracted	Extended		
	4	1430	4021	90	90
5	1700	5011	90	90	
6	1980	6011	90	80	
7	2260	7011	90	80	
8	2540	8011	90	70	
9	2820	9011	90	70	

Base Tube Ø200

5 sections	Model	Dimensions		Top tube Ø mm	Payload kg
		Retracted	Extended		
	4	1270	4034	140	210
5	1500	5024	140	210	
6	1730	6014	140	200	
7	1960	7004	140	200	
8	2200	8044	140	190	
9	2410	9014	140	190	
10	2640	10004	140	180	

Base tube Ø152

4 sections	Model	Dimensions mm		Top tube Ø mm	Payload kg
		Retracted	Extended		
	4	1430	4021	115	150
5	1700	5011	115	150	
6	1980	6011	115	140	
7	2260	7011	115	140	
8	2540	8011	115	130	
9	2820	9011	115	130	

6 sections	Model	Dimensions mm		Top tube Ø mm	Payload kg
		Retracted	Extended		
	4	1180	4006	127	190
5	1380	5006	127	190	
6	1570	6046	127	180	
7	1770	7046	127	180	
8	1950	8026	127	170	
9	2150	9026	127	170	
10	2330	10006	127	160	
11	2530	11006	127	160	
12	2720	12046	127	160	

5 sections	Model	Dimensions mm		Top tube Ø mm	Payload kg
		Retracted	Extended		
	4	1270	4035	102	130
5	1500	5025	102	130	
6	1720	6045	102	120	
7	1950	7035	102	120	
8	2180	8025	102	110	
9	2400	9045	102	110	
10	2630	10035	102	100	

7 sections	Model	Dimensions mm		Top tube Ø mm	Payload kg
		Retracted	Extended		
	4	1130	4028	115	170
5	1290	5028	115	170	
6	1470	6048	115	160	
7	1630	7048	115	160	
8	1790	8048	115	150	
9	1950	9048	115	150	
10	2130	10068	115	140	
11	2290	11068	115	140	
12	2460	12018	115	130	
13	2620	13018	115	130	

6 sections	Model	Dimensions mm		Top tube Ø mm	Payload kg
		Retracted	Extended		
	4	1200	4029	90	110
5	1380	5009	90	110	
6	1570	6049	90	100	
7	1770	7049	90	100	
8	1950	8029	90	90	
9	2130	9009	90	90	
10	2330	10009	90	80	
11	2520	11049	90	80	
12	2700	12029	90	70	

8 sections	Model	Dimensions mm		Top tube Ø mm	Payload kg
		Retracted	Extended		
	5	1250	5000	102	140
6	1400	6060	102	140	
7	1540	7040	102	130	
8	1680	8020	102	130	
9	1820	9000	102	120	
10	1970	10060	102	120	
11	2110	11040	102	110	
12	2270	12040	102	110	
13	2410	13020	102	100	
14	2550	14000	102	100	

MECMAST

Base Tube Ø200

9 sections	Model	Dimensions mm		Top tube Ø mm	Payload kg
		Retracted	Extended		
	5	1240	5012	90	120
6	1370	6022	90	120	
7	1480	7012	90	120	
8	1610	8022	90	110	
9	1740	9072	90	110	
10	1870	10042	90	100	
11	2000	11052	90	100	
12	2130	12062	90	90	
13	2260	13072	90	90	
14	2390	14082	90	80	
15	2510	15002	90	80	
16	2640	16012	90	80	

Base Tube Ø250

9 sections	Model	Dimensions mm		Top tube Ø mm	Payload kg
		Retracted	Extended		
	5	1240	5012	115	180
6	1370	6022	115	180	
7	1500	7032	115	180	
8	1630	8042	115	170	
9	1780	9072	115	170	
10	1910	10082	115	160	
11	2030	11002	115	160	
12	2160	12012	115	150	
13	2290	13022	115	150	
14	2420	14032	115	140	
15	2570	15062	115	140	
16	2700	16072	115	130	

Base Tube Ø250

6 sections	Model	Dimensions mm		Top tube Ø mm	Payload kg
		Retracted	Extended		
	4	1200	4026	152	250
5	1400	5026	152	250	
6	1600	6026	152	240	
7	1800	7026	152	240	
8	1980	8006	152	230	
9	2180	9006	152	230	
10	2370	10046	152	220	
11	2570	11046	152	220	
12	2770	12046	152	220	

10 sections	Model	Dimensions mm		Top tube Ø mm	Payload kg
		Retracted	Extended		
	6	1340	6014	102	160
7	1460	7034	102	160	
8	1580	8054	102	150	
9	1700	9074	102	150	
10	1830	10014	102	140	
11	1950	11034	102	140	
12	2070	12054	102	130	
13	2190	13074	102	130	
14	2305	14044	102	120	
15	2420	15014	102	120	
16	2540	16034	102	110	
17	2660	17054	102	110	

7 sections	Model	Dimensions mm		Top tube Ø mm	Payload kg
		Retracted	Extended		
	4	1150	4048	140	230
5	1310	5048	140	230	
6	1490	6068	140	220	
7	1660	7018	140	220	
8	1820	8018	140	210	
9	1980	9018	140	210	
10	2160	10038	140	200	
11	2320	11038	140	200	
12	2500	12058	140	190	
13	2660	13058	140	190	

11 sections	Model	Dimensions mm		Top tube Ø mm	Payload kg
		Retracted	Extended		
	6	1340	6046	90	140
7	1455	7031	90	140	
8	1565	8041	90	130	
9	1675	9051	90	130	
10	1780	10006	90	120	
11	1890	11016	90	120	
12	2000	12026	90	110	
13	2110	13036	90	110	
14	2220	14046	90	100	
15	2330	15056	90	100	
16	2440	16066	90	90	
17	2535	17021	90	90	
18	2655	18031	90	80	
20	2875	20051	90	80	

8 sections	Model	Dimensions mm		Top tube Ø mm	Payload kg
		Retracted	Extended		
	5	1270	5020	127	200
6	1410	6000	127	200	
7	1560	7060	127	190	
8	1720	8060	127	190	
9	1860	9040	127	180	
10	2000	10020	127	180	
11	2140	11000	127	170	
12	2300	12000	127	170	
13	2450	13060	127	160	
14	2590	14040	127	160	

SPECIAL MAST SYSTEMS

MECMAST

CONTROLS AND BRACKETS

LAPTOP / PC



REMOTE CONTROL

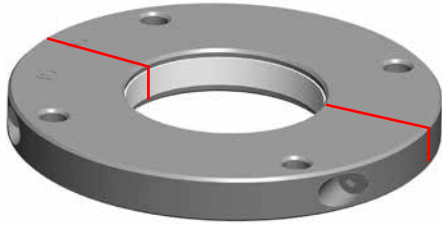
Also available with visual display



TOUCHSCREEN CONTROL

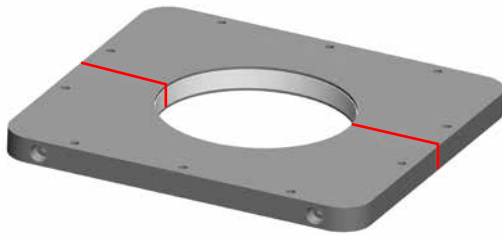


SPECIAL MAST SYSTEMS ACCESSORIES

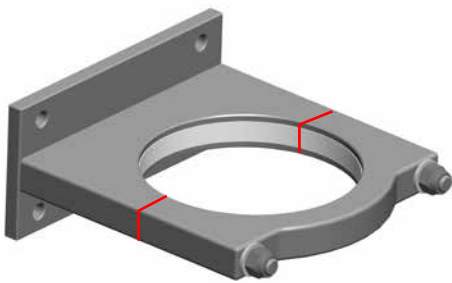


ROOF BRACKET

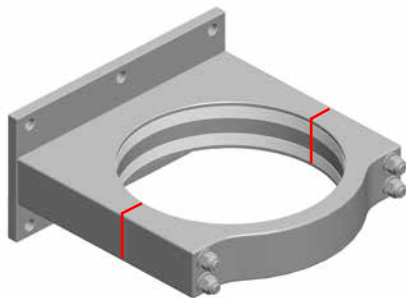
Red lines indicate where brackets split



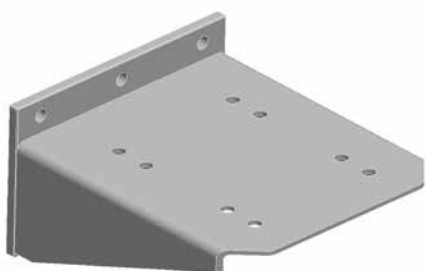
SQUARE ROOF BRACKET



UPPER FIXING BRACKET



REINFORCED UPPER FIXING BRACKET



LOWER FIXING BRACKET