

# (((T))) TOTALMAST SOLUTIONS PRODUCT DETAILS

AUGUST 2024 | OVER 600 MASTS IN STOCK FOR NEXT DAY DELIVERY



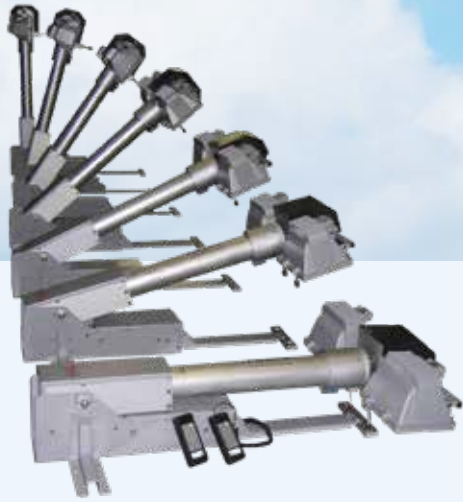
CF  
Approved  
2-Year  
Guarantee



Proud to be in association with  
**FIRECO**  
TELESCOPIC MASTS & FIRE EQUIPMENT



A FULL PRICE LIST IS AVAILABLE ON REQUEST



We are now offering a range of extremely strong, galvanised and powder coated steel manual winch up box section masts, and these are also available motorised, with a remote control handset.

[See page 15](#)

We have also launched a slide and pivot trailer system for mobile on site deployment of masts up to 340mmØ + 30m extended.

We now have available the 5 & 6m stainless steel Hiperpod Premier which can be tamper proof.

[See page 12](#)

New and improved products for 2024  
[See pages 9 and 15](#)

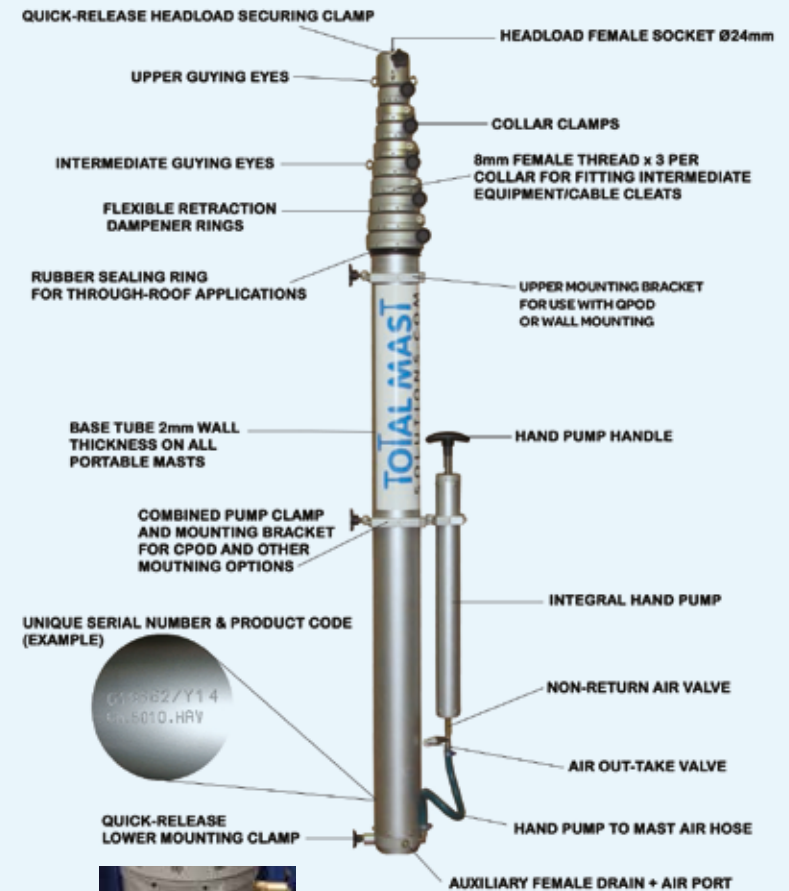
## CONTENTS

Index and new products	2
Portable Masts - General overview	3
Portable Masts - A brief selection	4
Masts mounting options	6
Lightweight Mast Accessories	7
Lightweight Masts Mounting Options	8
Masts Mounting options	10
The Hiperpod Range	12
Box Section Masts	15
Keyed Masts	16
Keyed Mast Accessories	17
Keyed Masts - A brief selection	18
Vehicle Mounted Masts	20
Trailer Mast Systems	21
Special mast Systems	22
Mast Accessories	23
Military Masts	28
Emergency Services Masts	30
Masts Rental Made Easy	31
Company Profile	32

## PORTABLE MASTS

Extending between 2m and 20m in height, our pneumatic portable masts are available in three base tube diameter sizes: Ø 66mm, Ø 80mm and Ø 101mm. Each mast is constructed from 2mm anodised aluminium and therefore very robust. The masts come complete with integral hand pump, full 2 year guarantee, clampable collars, quick release air outtake valve and head load adapter.

ALL MASTS ARE FULLY ANODISED AND ALL STAINLESS STEEL FIXINGS SECURED WITH ADHESIVE DURING MANUFACTURE



FIXED BOLT DOWN BASE SUPPLIED AS STANDARD

# PORTABLE MASTS

## A BRIEF SELECTION

Base Tube Diameter	Extended Height m/ft	Retracted Height	Sections	Max Head Load Weight	Weight with Hand Pump	Product Code	Top Tube Diameter
Ø 66mm or 2 5/8"	2.963 / 9' 8 3/4"	1.070m	4	16kg	6kg	CP54-11	Ø 45mm
Ø 66mm or 2 5/8"	3.483 / 11' 5"	1.200m	4	15kg	6.5kg	CP54-12	Ø 45mm
Ø 66mm or 2 5/8"	3.963 / 13'	1.320m	4	15kg	7kg	CP54-13	Ø 45mm
Ø 66mm or 2 5/8"	5.103 / 16' 8 3/8"	1.620m	4	13kg	8kg	CP54-15	Ø 45mm
Ø 66mm or 2 5/8"	5.980 / 19' 7 1/4"	1.460m	6	8kg	9kg	CP56-05	Ø 31mm
Ø 66mm or 2 5/8"	5.923 / 19' 5"	1.810m	4	12kg	9kg	CP54-16	Ø 45mm
Ø 66mm or 2 5/8"	7.016 / 23'	1.616m	6	7kg	10kg	CP56-06	Ø 31mm
Ø 66mm or 2 5/8"	7.930 / 26'	1.835m	6	7kg	11kg	CP56-07	Ø 31mm
Ø 66mm or 2 5/8"	9.080 / 29' 9 1/4"	1.960m	6	6kg	11.5kg	CP56-08	Ø 31mm
Ø 80mm or 3 1/8"	5.033 / 16' 6"	1.220m	7	12kg	11.5kg	CO57-01	Ø 38mm
Ø 80mm or 3 1/8"	4.983 / 16' 4"	1.650m	4	24kg	10.5kg	CO54-26	Ø 59mm
Ø 80mm or 3 1/8"	5.799 / 19'	1.200m	8	9kg	11.6kg	CO58-01	Ø 31mm
Ø 80mm or 3 1/8"	6.999 / 22' 11 3/8"	1.420m	8	9kg	13.4kg	CO58-02	Ø 31mm
Ø 80mm or 3 1/8"	6.013 / 19' 8 1/2"	1.360m	7	12kg	12.4kg	CO57-02	Ø 38mm
Ø 80mm or 3 1/8"	6.005 / 19' 8 1/4"	1.460m	6	16kg	12kg	CO56-17	Ø 45mm
Ø 80mm or 3 1/8"	5.923 / 19' 5"	1.810m	4	23kg	11.5kg	CO54-27	Ø 59mm
Ø 80mm or 3 1/8"	6.923 / 22' 8 3/8"	2.060m	4	20kg	12.5kg	CO54-28	Ø 59mm
Ø 80mm or 3 1/8"	6.995 / 22' 11 1/4"	1.625m	6	16kg	13kg	CO56-18	Ø 45mm
Ø 80mm or 3 1/8"	7.930 / 26'	1.835m	6	14kg	14.5kg	CO56-19	Ø 45mm
Ø 80mm or 3 1/8"	9.003 / 29' 16 1/4"	1.830m	7	9kg	15.7kg	CO57-05	Ø 38mm
Ø 80mm or 3 1/8"	8.870 / 29' 1 1/8"	1.950m	6	13kg	15kg	CO56-20	Ø 45mm
Ø 80mm or 3 1/8"	10.018 / 32' 10 1/4"	1.975m	7	8kg	16.7kg	CO57-06	Ø 38mm
Ø 80mm or 3 1/8"	10.120 / 33' 2 1/4"	2.200m	6	11kg	16.5kg	CO56-21	Ø 45mm
Ø 80mm or 3 1/8"	12.028 / 39' 5 3/8"	2.305m	7	7kg	19.1kg	CO57-08	Ø 38mm
Ø 80mm or 3 1/8"	13.023 / 42' 8 1/2"	2.490m	7	6kg	20kg	CO57-09	Ø 38mm
Ø 80mm or 3 1/8"	15.018 / 49' 3 1/8"	2.775m	7	5kg	22kg	CO57-11	Ø 38mm

Numerous other sizes are available.

We also supply padded mast bags. Please ask us for a price.

Upper and lower mounting brackets, secondary rapid retraction drain valve and cable retaining cleats are available

# PORTABLE MASTS

## A BRIEF SELECTION

Base Tube Diameter	Extended Height m/ft	Retracted Height	Sections	Max Head Load Weight	Weight with Hand Pump	Product Code	Top Tube Diameter
Ø 101mm or 4"	6.060 / 19' 10 3/8"	1.460m	6	28kg	17.5kg	CM56-01	Ø 66mm
Ø 101mm or 4"	5.752 / 18' 10 1/4"	1.810m	4	30kg	16kg	CM54-05	Ø 80mm
Ø 101mm or 4"	6.495 / 21' 3 1/2"	1.250m	11	8kg	18.8kg	CM51-02	Ø 31mm
Ø 101mm or 4"	7.547 / 24' 9"	1.400m	10	13kg	20.4kg	CM50-08	Ø 38mm
Ø 101mm or 4"	7.512 / 24' 7 1/2"	1.500m	9	14kg	21.2kg	CM59-01	Ø 45mm
Ø 101mm or 4"	7.476 / 24' 6 1/4"	1.575m	7	22kg	19.6kg	CM57-01	Ø 59mm
Ø 101mm or 4"	8.867 / 29' 1"	1.550m	10	11kg	22.2kg	CM50-09	Ø 38mm
Ø 101mm or 4"	9.052 / 29' 8 1/4"	1.680m	9	13kg	23.2kg	CM59-02	Ø 45mm
Ø 101mm or 4"	9.030 / 29' 7 3/8"	1.715m	8	14kg	22.3kg	CM58-07	Ø 52mm
Ø 101mm or 4"	9.046 / 29' 8"	1.825m	7	20kg	22.1kg	CM57-02	Ø 59mm
Ø 101mm or 4"	10.457 / 34' 3 3/8"	1.700m	10	9kg	23.9kg	CM50-10	Ø 38mm
Ø 101mm or 4"	10.550 / 34' 7 1/4"	1.940m	8	12kg	24.7kg	CM58-08	Ø 52mm
Ø 101mm or 4"	10.502 / 34' 5 1/4"	1.850m	9	12kg	25.1kg	CM59-03	Ø 45mm
Ø 101mm or 4"	10.496 / 34' 5 1/8"	2.075m	7	18kg	24.6kg	CM57-03	Ø 59mm
Ø 101mm or 4"	10.995 / 36' 1/2"	1.650m	11	6kg	22.9kg	CM51-05	Ø 31mm
Ø 101mm or 4"	11.957 / 39' 2 1/2"	1.850m	10	8kg	25.6kg	CM50-11	Ø 38mm
Ø 101mm or 4"	12.000 / 39' 4 1/4"	2.130m	8	11kg	26.7kg	CM58-09	Ø 52mm
Ø 101mm or 4"	12.476 / 40' 11"	2.375m	7	12kg	27.5kg	CM57-04	Ø 59mm
Ø 101mm or 4"	13.520 / 44' 4 1/8"	2.320m	8	10kg	28.6kg	CM58-10	Ø 52mm
Ø 101mm or 4"	14.597 / 47' 10 3/8"	2.150m	10	5kg	29.2kg	CM50-13	Ø 38mm
Ø 101mm or 4"	15.022 / 49' 3 1/4"	2.370m	9	8kg	30.8kg	CM59-06	Ø 45mm
Ø 101mm or 4"	14.960 / 49' 5 1/8"	2.500m	8	9kg	30.5kg	CM58-11	Ø 52mm
Ø 101mm or 4"	15.106 / 49' 6 1/2"	2.785m	7	10kg	30.6kg	CM57-05	Ø 59mm
Ø 101mm or 4"	16.860 / 55' 3 1/2"	2.592m	9	7kg	32.5kg	CM59-07	Ø 45mm
Ø 101mm or 4"	17.010 / 55' 9 3/8"	2.800m	8	8kg	32.8kg	CM58-12	Ø 52mm
Ø 101mm or 4"	19.832 / 65' 6"	3.100m	9	5kg	38.2kg	CM59-08	Ø 45mm

Please consult our technical team when purchasing a mast with your head load size and weight. They will be able to assist you with guying, windage and deflection charts to ensure we supply you with the right kit for your individual requirement.

Remember to order a lubrication set and adaptor to suit your head load.

Ex Demo/refurbished systems at significantly reduced prices are available.

## THE NEW STAINLESS STEEL TRIPOD – QPOD

Our newly redesigned quick release tripod is now produced from strong stainless steel along with an aluminum central round stem and strong cast fittings for smooth effortless deployment. All 3 legs and the top and bottom central mounting points are telescopic for easy deployment on uneven or sloping ground.

- 3 x Strong fully adjustable telescopic legs with pivoting feet, guying points and ground stake holes
- Telescopic upper and lower mast mounting adaptors with integral 2 way spirit level
- 3 x Ballast hanging points on central stem with quick release carabiners
- The reduced weight increases strength and footprint size for optimum stability
- Compact size when retracted, no rust issues and increased long service lifespan
- A Full range of additional accessories are available including 3 x Braked leg wheels, padded carry bags and tripod stakes.
- Please let us know if you require weight bags or ground stakes

### Q Pod

Maximum leg radius 1.370m,  
weight 13kg, retracted size  
1.110m x 140mm x 140mm



### Q Pod

Maximum leg radius 1.810m,  
weight 17.5kg, retracted size  
1.450m x 140mm x 140mm



### Q Pod XL

Maximum leg radius 2.240m,  
weight 21 kg, retracted size  
1.920m x 140mm x 140mm

## QPOD ACCESSORIES

### TRIPOD STEP SHELF

Constructed of aluminium tread plate, the step shelf simply attaches to the tripod for holding equipment or as a step to access clamps or install equipment on taller retracted masts.



Available for

#### QPOD S

Weight 2.5kg

#### QPOD L

Weight 5.5kg



### QUICK RELEASE QPOD WHEEL BASE

1. Specifically designed to enable quick and easy movement of masts and can be used with masts with a QPOD.

Weight 3kg

420mm x 440mm x 170mm

2. Optional Pneumatic wheel base also available

Weight 4kg

520mm x 600mm x 300mm



- All Q Pods are supplied with bolt fixings on telescopic parts for anti-tamper requirements.
- If you require a set of clamp knobs please order these
- Optional 4th quick release telescopic leg offers increased stability and footprint. Fits to mast side.

# LIGHTWEIGHT MASTS

## MOUNTING OPTIONS

### 1. ADJUSTABLE TOW HITCH MOUNT - ZINC PLATED OR POWDER COATED

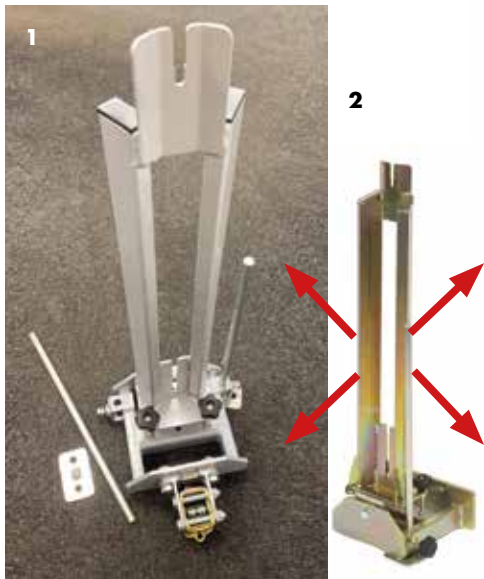
Available for masts up to 115mm Ø. The universal vehicle mounting system attaches to the tow hitch of any vehicle. It is fully adjustable for vertical deployment of the mast when parked on uneven ground.

Weight – 11kg Size – 875 x 270 x 220mm.

### 2. Universal model for a tow ball

Post pivots away from rear door to allow access to vehicle rear space. It has a drop down leg to reduce vehicle suspension movement.

**Upper support system available for increased stability**

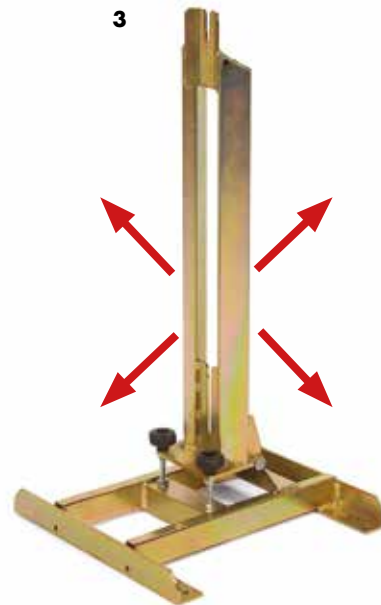


### 3. ADJUSTABLE BOLT DOWN MAST MOUNT - ZINC PLATED OR POWDER COATED

It can be easily fixed to trailers or onto a suitable concrete base. For bigger/heavier masts extra lateral steel supports are available. Fabricated from strong steel box section and of rugged design, the entire assembly is zinc coated and the pivot post is quick release or can be anti tamper (locked in position).

**The mast can be stowed horizontally for transport.**

Weight – 12kg Size – 420 x 450 x 870mm.

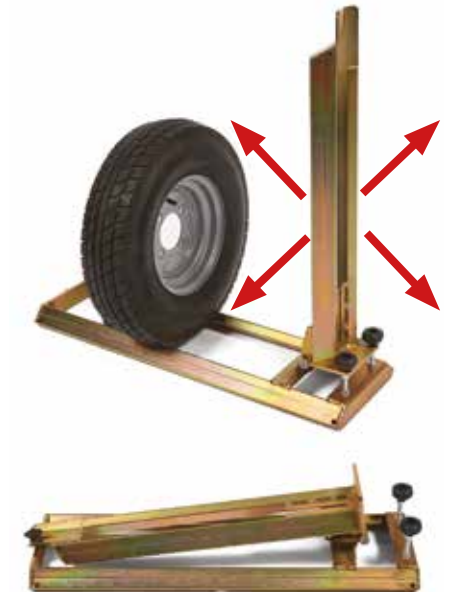


# LIGHTWEIGHT MASTS

## MOUNTING OPTIONS

### ADJUSTABLE DRIVE ON MAST MOUNT - ZINC PLATED OR POWDER COATED

The fully adjustable drive on vehicle mounting system is ideal when the tripod mount is not convenient. Simply, drive on using front or rear wheel. The mounting post can be adjusted forward, rearwards and side to side to allow level deployment of the mast, and stowed flat when not in use. Weight – 12kg Size – 880 x 270 x 215m Upper support system available for increased stability. A reinforced drive-on version is available.



### New Development 2025 - The Adjustable Slide Out System

Taking a combination of functionality from our drive on, bolt down & tow hitch systems we have developed a new system. The mast will simply roll in or out of a side or rear door of a vehicle on a strong roller track system.

When stowed inside the vehicle the mast can be vertical, layed flat or at any angle. When deployed it will be fully adjustable for level deployment. It will be quick release for deployment away from the vehicle on a tripod and very easy & quick to deploy.

## MASTS MOUNTING OPTIONS

### LAMP POST/STREET FURNITURE MAST MOUNT

The mast mounting bracket that fits to all diameters and shapes of lamp posts, etc. Commonly used for traffic analysis, air quality and noise monitoring. Strong steel construction – fully zinc coated. Suitable for masts up to 4" Ø and up to 17m extended.



### MOUNTING POSTS & WALL MOUNTING BRACKETS

Numerous wall mounting brackets are available and can come with spacers to allow masts to be mounted away from the wall to avoid overhanging soffits & guttering. The standard distance from a wall is 215 mm (8.5" in the UK) other sizes can be ordered – zinc plated or powder coated. Weight – 5kg.



#### ALSO AVAILABLE...

### GALVANISED BOX SECTION STEEL MOUNTING POSTS

These can be concreted into position then the mast is mounted on quick release brackets for rapid deployment.

Many sizes available depending on mast size.

Strong bolt down types are available.

## MASTS MOUNTING OPTIONS

### MOUNTING CLAMPS

A large range of upper and lower mounting clamps are available for all diameter masts for easy installation to walls, vehicles, ISO containers, roof racks etc.

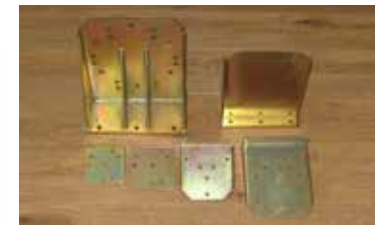


Selection of mounting clamps



Quick release

Fixed



Lower mast mounting bracket

Hinged types are available to enable the mast to lay horizontal manually or by winch

### ROOF RACK CLAMPS

Useful for transporting a mast on your roof rack. The clamps are quick release and sold in pairs. A mast head protection cover should be ordered with this item to protect the mast in transport (see page 27).



Intermediate clamps and brackets for fixing equipment part way up the mast can be ordered.

Rotating guying clamps that keep the guy-ropes in line whilst rotating the mast are available.

# THE HIPERPOD RANGE

LIGHTWEIGHT PUSH UP WITH INTEGRAL TRIPODS



1. **Optional set of braked wheels**
2. **Fully adjustable equipment angle adjuster ball head**

**DISTRIBUTORS AND RESELLERS WELCOME  
ALL OUR SYSTEMS CAN BE SUPPLIED UNBRANDED**



Strong top female adaptor socket.



Solid cast collar clamps.



Center column can be againsted the ground to increase stability,



3 extendable legs.

# THE HIPERPOD RANGE

LIGHTWEIGHT PUSH UP WITH INTEGRAL TRIPODS

## THE SUPER STRONG HIPERPOD STAINLESS STEEL

The Hiperpod stainless steel masts come with fully adjustable integral tripods and are very strong making them robust and durable. The clamp collars are made from solid cast alloy. All 4 tubes have a safe retraction cushioning spring and a 50mm anti finger trap gap. All come with pivoting feet with ground stake holes and guying points, ballast weight bag hanging points and top guying eyes.

### HSS4

Extended height 4m, Retracted height 1.450m, Weight 14.5kg, Max headload 18kg, Max leg radius 0.8m, Top adapter socket 28mm diameter

### HSS5

Extended height 5m, Retracted height 1.730m, Weight 17kg, Max headload 16kg, Max leg radius 1.1m, 3 x Fixed leg extenders, 1 x 1m height extender 25.5mm diameter with top adapter socket 27mm diameter

### HSS6

Extended height 6m, Retracted height 1.510m, Weight 19.5kg, Max headload 14kg, Max leg radius 1.3m, 3 x Quick release leg extenders, 2 x 1m height extenders 25.5mm diameter with top adaptor socket 27mm diameter

## ALL HIPERPOD COMES WITH

- 1 x Mast with Integral Tripod
- 3 x Adjustable telescopic peg-able Feet with guying points
- 1 x Equipment Carry Bag
- 1 x Padded Mast Carry Bag
- 1 x Stabilisation Weight Bag
- 1 x Integral Spirit Level
- 1 x Guying Set with Carabiners plus guy adapter
- 3 x Cable Management Straps
- 3 x Tripod Ground Stakes & Mallet
- 1 x Standard Quick Release Headload Adaptor

**A full range of head load adaptors and accessories are available.**

**Due to the Hiperpods light weight and compact size it has proven to be very popular across the world with search and rescue organisations, professional communications companies, emergency lighting plus much, much more. Extremely easy to set up and operate making the Hiperpod ideal for fast deployment.**

**Ex Demo/refurbished systems at significantly reduced prices are available.  
Export Distributors Welcome.**

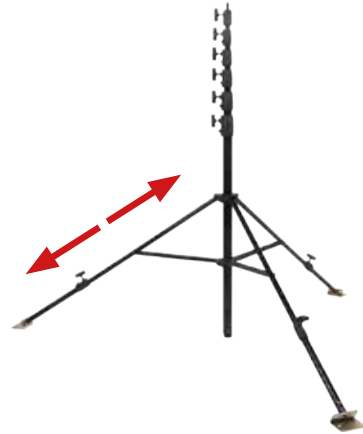
# THE HIPERPOD RANGE

LIGHTWEIGHT PUSH UP WITH INTEGRAL TRIPODS

**OVER 450 IN STOCK FOR RAPID DELIVERY**

## HIPERPOD STANDARD

- Robust aluminium construction
- Air cushioned retraction
- Extended height up to 7.3m
- Retracted height 1.6m
- Product weight 7.5kg + 3 x legs = 10.5kg
- Max. head-load 3.5kg at full height, 5kg at 5.5m
- Top tube diameter 25mm
- Base tube diameter 45mm
- Fully adjustable legs with pivoting feet and guying points



## HIPERPOD PREMIER

- Sturdy steel construction with adjustable tripod
- Extended height up to 7.3m
- Retracted height 1.73m
- Product weight 11.3kg
- Max. head-load 10kg at full height, 11.5kg at 6m
- Top tube diameter 25mm
- Base tube diameter 50mm
- Top tube diameter 25mm
- Tube wall thickness 1.5mm
- Option of internal cables
- Fully adjustable telescopic legs with pivoting feet and guying points
- 50mm anti finger trap gap between collars and anti collision springs at all tube bases



**See page 13 for all items included as standard**

**Ex Demo/refurbished systems at significantly reduced prices are available. Export Distributors Welcome.**

# SUPER STRONG STEEL BOX SECTION MASTS

MANUAL WINCH UP OR REMOTE CONTROL MOTORISED

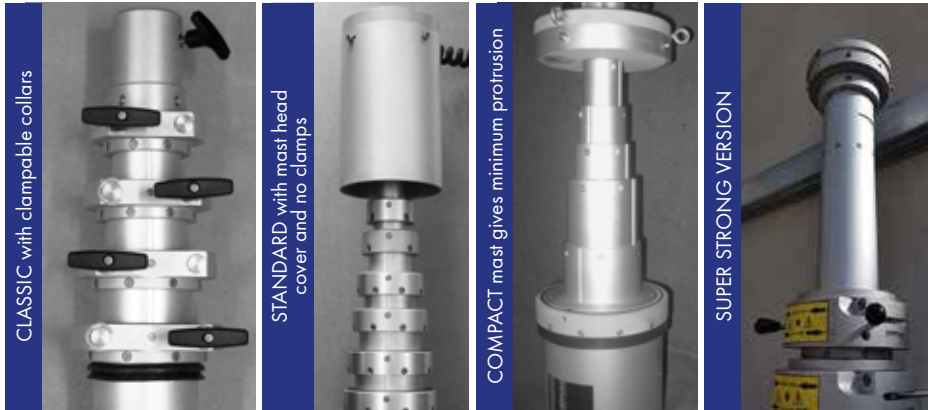
- Strong fully galvanized & powder coated 2mm sections with smooth simultaneous extension. Auto lock at any height.
- Ideal for sub zero & dusty environments. Numerous applications, surveillance, communications, floodlighting, military & emergency services.
- Numerous mounting options for trailer, wall, tripod, fixed or pivoting and ground mounting systems in stock.
- Rapid extension/retraction. Suitable for vertical, horizontal & inverted applications.
- Full range of headload quick release adaptors & brackets, rapid production of specific types by our craftsmen.
- Motorised versions (Actuator) 12v, 24v, 110v & 240v with wired remote control handset standard or wireless options.
- Optional manual left height extender price £94. All masts & adaptors have 3 or 4 guying eyes.
- Anti tamper versions, winch lock + removable handle, winch cover box, anti-climb spikes and many other available.



Product Code	Extended Height	Retracted Height	Sections	Product Weight	Box Section Tube Sizes (mm)	Headload Capacity	Optional Manual 45x 45mm Extender Length	Total Extended Height with extender		
W3	3M	1.3M	4	16KG	100, 80, 60, 50	50KG	970MM	3.870M		
W4	4M	1.38M	4	18KG	100, 80, 60, 50	50KG	1.050M	4.950M		
W4.5	4.5M	1.43M	4	21KG	100, 80, 60, 50	50KG	1.1M	5.5M		
W5	5M	1.6M	4	22KG	100, 80, 60, 50	50KG	1.270M	6.170M		
W6	6M	1.780M	4	24KG	100, 80, 60, 50	50KG	1.430M	7.330M		
W7	7M		4	28KG	100, 80, 60, 50	50KG	1.770M	8.670M		
W8	8M	2.5M	4	31KG	100, 80, 60, 50	45KG	2.170M	10M		
W9	9M	2.78M	4	36KG	100, 80, 60, 50	45KG	2.430M	11.3M		
W10	10M	2.8M	5	44KG	120, 100, 80, 60, 51	45KG	2.350M	12.15M		

**Ex Demo/refurbished systems at significantly reduced prices are available. Export Distributors Welcome.**

## KEYED MASTS A BRIEF EXPLANATION



All our keyed masts are built by our expert craftsmen using the best quality materials. The tube wall thickness ranges from 3.5mm minimum to 8mm.

This gives maximum strength and durability. They are fully anodised for protection even against the most harsh of elements. Each mast is thoroughly tested in our quality control department prior to dispatch ensuring complete customer satisfaction.

Many masts can be supplied with internal spiral cables – numerous types available – see p25.

We have over 8000 different sizes in our range and can also rapidly design and build special sizes on request. All our masts can withstand the most severe of weather from arctic conditions through to the heat and sand storms of a desert.

The working temperature is – 30 degrees to + 60 degrees Celsius.

All systems come with a quick release air intake valve and an over pressure auxiliary air outtake valve as standard. We guarantee our masts for 2 years and the supply of spare parts for 15 years.

Our group produce over 10,000 masts a year and this scale of production ensures we are the most competitive mast manufacturer on price.

Rapid delivery of quality products ensures we are the trusted supplier to military, governments, fire & emergency services, the communications industry, security companies and many other applications. All masts are clear anodised as standard (silver). Other anodised colours also available.



Remote control collars are available on the Super Strong range

## KEYED MAST ACCESSORIES

### MANUAL MAST ROTATIONAL HAND WHEEL

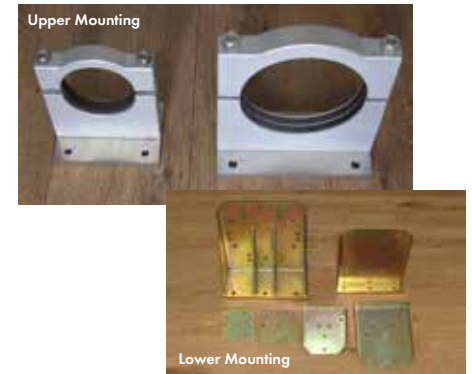
Supplied in 2 halves. They simply clamp around the mast to give manual mast rotation. Available for all diameter of keyed masts.



### KEYED MAST UPPER + LOWER MOUNTING BRACKETS

These make fitting a keyed mast to a wall or other structure very easy. Upper and lower mounting bracket available. Reinforced versions are available for larger diameter masts. These brackets feature an inner PTFE slip ring to allow mast rotation facility.

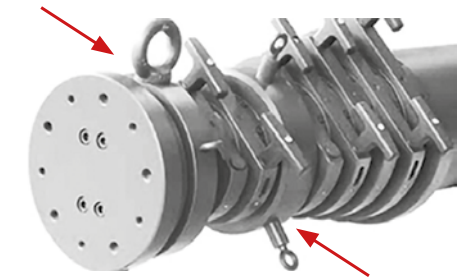
Low profile versions available



### ROTATING GUYING EYES

Commonly used on keyed masts with mast rotation function to stop guys from rotating with the mast.

Intermediate equipment mounting plates are available.



### ROOF MOUNTING BEARING/ BRACKETS

Supplied in 2 halves. These brackets simply clamp around the mast. They have pre drilled bolt holes for fixing the mast to roofs of vehicles. There is a PTFE slip ring on the inner face to allow the base tube to rotate. All of our masts have a rubber seal ring fitted as standard that can be slid down to the roof bearing to form a water tight seal.

Available in all sizes.



Prices for these items are subject to the relevant mast diameter  
Please call for more details

# KEYED MASTS - A BRIEF SELECTION

HUNDREDS OF SIZES AVAILABLE

Base Tube Size	Extended Height (m)	Retracted Height (m)	Number of Sections	Max Head load Weight	Mast Weight	Product Code	Top Tube Diameter (mm)	Classic or Standard Model
Ø 64mm	1.855m	0.939m	3	20kg	6.4kg	CZ33-01	38mm	Standard
Ø 64mm	3.151m	1.369m	3	20kg	8.2kg	CZ33-04	38mm	Standard
Ø 64mm	4.635m	1.879m	3	15kg	10.2kg	CZ33-07	38mm	Standard
Ø 64mm	5.651m	2.219m	3	15kg	11.7kg	CZ33-09	38mm	Standard
Ø 77mm	5.873m	1.909m	4	13kg	14.9kg	CU34-07	38mm	Standard
Ø 77mm	5.873m	1.932m	4	13kg	15.5kg	CU64-07	38mm	Classic
Ø 77mm	6.962m	2.269m	4	12kg	16.9kg	CU34-09	38mm	Standard
Ø 77mm	6.962m	2.292m	4	12kg	17.5kg	CU64-09	38mm	Classic
Ø 90mm	5.014m	2.047m	3	25kg	16.6kg	CL33-36	64mm	Standard
Ø 90mm	5.014m	2.062m	3	25kg	17kg	CL63-36	64mm	Classic
Ø 90mm	7.944m	2.160m	5	10kg	22kg	CL35-09	38mm	Standard
Ø 90mm	7.944m	2.191m	5	10kg	22.8kg	CL65-09	38mm	Classic
Ø 115mm	5.872m	1.776m	5	50kg	26.2kg	CS65-20	64mm	Classic
Ø 115mm	6.372m	1.845m	5	50kg	27kg	CS35-21	64mm	Standard
Ø 115mm	7.872m	2.196m	5	40kg	31.3kg	CS65-23	64mm	Classic
Ø 115mm	7.872m	2.165m	5	40kg	30.7kg	CS35-23	64mm	Standard
Ø 115mm	9.186m	2.218m	6	40kg	34kg	CS66-07	51mm	Classic
Ø 115mm	9.186m	2.179m	6	40kg	33.3kg	CS36-07	51mm	Standard
Ø 115mm	10.932m	2.533m	6	35kg	38.2kg	CS66-09	51mm	Classic
Ø 115mm	10.932m	2.494m	6	35kg	37.4kg	CS36-09	51mm	Standard
Ø 115mm	15.023m	2.845m	7	20kg	47kg	CS67-15	38mm	Classic
Ø 115mm	17.034m	3.210m	7	15kg	52kg	CS67-17	38mm	Classic
Ø 127mm	12m	2.6m	7	50kg	47kg	CE6712	51mm	Classic
Ø 127mm	7.959m	1.881m	7	85kg	34.5kg	CE67-08	51mm	Classic
Ø 127mm	9.252m	2.279m	6	90kg	39.5kg	CE66-07	64mm	Classic
Ø 127mm	8.052m	2.079m	6	90kg	36kg	CE66-06	51mm	Classic
Ø 127mm	0.358m	2.440m	7	70kg	43kg	CE67-09	64mm	Classic

Base Tube Size	Extended Height (m)	Retracted Height (m)	Number of Sections	Max Head load Weight	Mast Weight	Product Code	Top Tube Diameter (mm)	Classic or Standard Model
Ø 152mm	6.385m	1.559m	8	90kg	43.3kg	CH68-01	64mm	Classic
Ø 152mm	6.385m	1.504m	8	110kg	41.4kg	CH38-01	64mm	Standard
Ø 152mm	8.038m	2.032m	6	130kg	49.6kg	CH66-20	90mm	Classic
Ø 152mm	9.448m	2.119m	7	100kg	54.7kg	CH67-20	77mm	Classic
Ø 152mm	11.783m	2.712m	6	100kg	64.3kg	CH66-24	90mm	Classic
Ø 152mm	11.783m	2.673m	6	100kg	62.8kg	CH36-24	90mm	Standard
Ø 152mm	17.04m	4.193m	5	70kg	95.5kg	CH65-19	102mm	Classic
Ø 152mm	17.04m	4.162m	5	70kg	94.4kg	CH35-19	102mm	Standard
Ø 152mm	20.488m	3.781m	7	25kg	99kg	CH67-25	77mm	Classic
Ø 152mm	26.00m	3.785m	9	10kg	109kg	CH79-11	51mm	Classic
Ø 200mm	6.445m	1.573m	8	180kg	66.5kg	CX68-16	102mm	Classic
Ø 200mm	6.445m	1.518m	8	180kg	63.8kg	CX38-16	102mm	Standard
Ø 200mm	12.041m	2.751m	6	130kg	106.2kg	CX66-16	127mm	Classic
Ø 200mm	12.014m	2.712m	6	130kg	104kg	CX36-16	127mm	Standard
Ø 200mm	20.035m	3.778m	7	80kg	158.5kg	CX67-20	115mm	Classic
Ø 200mm	20.035m	3.731m	7	80kg	156.4kg	CX37-20	115mm	Standard
Ø 200mm	24.984m	3.387m	10	30kg	158.5kg	CX70-08	77mm	Classic
Ø 200mm	24.968m	3.400m	10	30kg	159.5kg	CX40-08	77mm	Standard
Ø 250mm	12.033m	2.290m	8	270kg	148.5kg	CG38-16	127mm	Standard
Ø 250mm	12.033m	2.398m	8	270kg	158kg	CG68-16	127mm	Classic
Ø 250mm	15.505m	2.610m	9	190kg	173kg	CG39-18	115mm	Standard
Ø 250mm	15.505m	2.726m	9	190kg	183.4kg	CG69-18	115mm	Classic
Ø 250mm	29.953m	3.480m	13	35kg	250.2kg	CG43-09	64mm	Standard
Ø 250mm	29.953m	3.628m	13	35kg	260.5kg	CG73-09	64mm	Classic
Ø 250mm	39.952m	4.190m	14	10kg	307.2kg	CG44-09	51mm	Standard
Ø 250mm	39.952m	4.346m	14	10kg	317.6kg	CG74-09	51mm	Classic

**340mm diameter mast are available, price and mast specifications on request**

**Prices for Compact masts are the same as Standard masts.**  
**A new range of super strong masts are now available with super strong collar clamps which will allow up to an impressive 500kg head load. Contact us for prices**  
**Please add 60-80mm to retracted height for quick release pin head option**  
**Ex Demo/refurbished systems at significantly reduced prices are available.**

'Keyed' refers to the keyway which runs the entire length of the mast to prevent the tube sections from turning independently. The entire mast can be rotated from the base, or a separate rotation device can be mounted to the top tube.

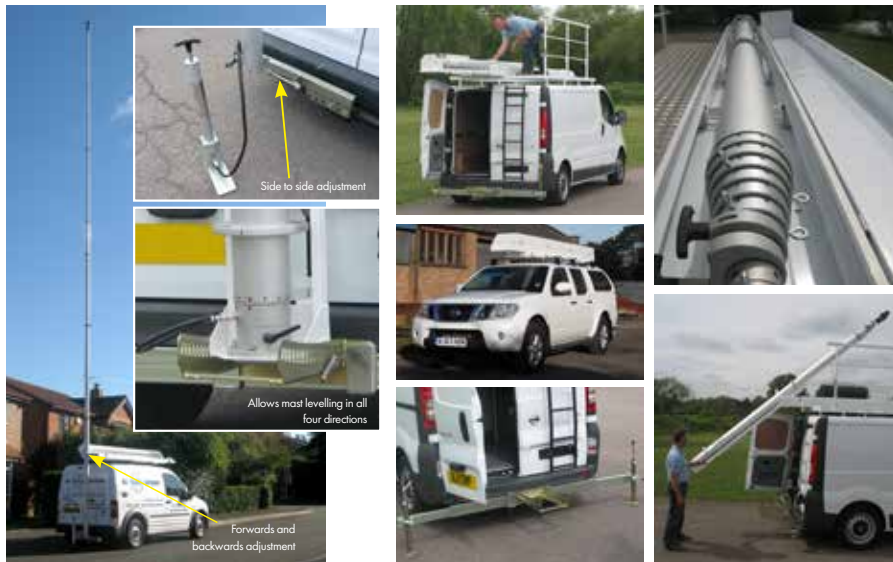


# VEHICLE MOUNTED MAST

## FAST, POPULAR & VERSATILE ROOF ROLLER BOX SYSTEMS

The mast is fixed into the roller carriage with a quick release clamp enabling rapid removal when deployed away from the vehicle on the tripod. Comes with tow hitch mast level assembly, full instructions and fixing kit. Fits to the nearside of a standard vehicle's roof rack for easy, safe deployment.

- Box lid available left or right hinged.
- Full fitting available by our expert craftsmen.
- Box supplied in standard white or black – other colours available.
- 12 volt compressor is supplied as standard to with this system



Through the roof vehicle installations



# TRAILER MAST SYSTEMS

A BRIEF SELECTION OF MANY TYPES AVAILABLE



## TRAILER MAST SOLUTIONS FOR EVERY APPLICATION

- Many galvanised chassis and pre built mast deployment systems in stock for rapid delivery
  - Rapid in house bespoke design and fabrication by our expert craftsmen
  - Single, double and triple axle types available along with braked and unbraked versions
  - Lightweight, medium and rugged off road / military trailers available
  - Single or double width extending outriggers with tubular or ribbed manual jacks and optional trailer bed corner props
  - EU compliant lighting, anti slip decking and spare wheel as standard
  - Anti tamper mast fixings with removable wheels and towbar available on request
  - Numerous types of horizontal pivoting frames, fixed vertical mounting posts or pivoting lay flat systems
  - Trailer systems to accommodate any of our masts from 2m to 40m extended
  - Manual pivot double safety winch or hydraulic mast deployment system available
  - UK / export delivery or collection from our premises in the midlands, all systems are fully tested prior to dispatch
  - Many years in service with military, government organisations, emergency services, surveillance teams, communications companies and numerous other operators.
- Images 1, 3 & 5** - Pivoting support system.  
**Image 2** - 35m mast mounted on our revolutionary new lift and pivot system.  
**Image 4** - Lay flat system.

**Ex Demo/refurbished systems at significantly reduced prices are available. Export Distributors Welcome.**

## SPECIAL MAST SYSTEMS A FEW EXAMPLES

Additional to our diverse range of Portable and Keyed mast systems, we also supply specialist masts for particular applications.

### 1. AQUAMAST

The patented system Aquamast is a brand new product to our range. It enables fire control in high buildings and in smaller streets, where larger fire trucks do not have enough space to enter.



### 2. AUTOMATIC ROOF MASTS

Roof masts can be operated either manually or electronically. The manual roof masts are easily mounted on the vehicle roof and can be 90° tilted, manually or electrically. Our automatic roof masts can be operated via a wired or wireless handset to control and rise to vertical and extend functions. They have an inbuilt compressor and internal wire within the mast to power the lamps. 12V or 24V versions are available. (See the roof mast on the front cover).



### 3. MECMAST

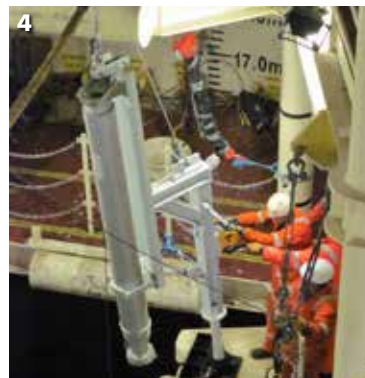
The MecMast is the new mechanical telescopic mast driven by an electrical motor. The MecMast provides an excellent solution for specially designed antennas, cameras and other specific equipment used for Communications and Surveillance. The mast requires no guying and can support heavy top loads up to 500kg.



### 4. INVERTED MASTS

Our masts can be used inverted (downwards) by utilising a winch and guy ropes – usually while mounted on a QPOD or fixed to a structure. They have proved an invaluable tool within the offshore oil industry as they are used for underwater inspection and installation monitoring without the need for a diver entering a very dangerous environment. They are also used in other industries for inspecting inside shafts, vessels and pipes.

Portable masts of any size can also be inverted using our standard QPOD with an adapter kit.



**We are constantly receiving new and interesting applications for telescopic masts.**

**We have the capability to rapidly design and build a system that is specific to your requirements.**

## MAST ACCESSORIES

### 12/24V, 160 ltr/min COMPRESSOR

This robust oilless twin cylinder 12 volt compressor delivers an impressive 160ltr/min air flow, has a thermostat overload protector and is suitable for masts up to 250 Ø. It has a cable with in line fuse and crocodile clamps for attaching to a standard vehicle battery or alternatively to automotive jump starters/inverters.



**Numerous other compressor types are available and we stock a full range of air pipe and parts.**

Also available our twin version, 320ltr/min for larger ma



### STAND PUMP

Free standing pneumatic hand pump can be used with all mast systems. Zinc coated steel base. Comes with a quick release air valve adapter and non return valve.

### INTEGRAL LAPTOP TRAY

These can be attached to any of our mast systems and are quick release. The laptop tray is formed from robust aluminium and acts as a platform for your equipment.

Weigh



## MAST ACCESSORIES

### ROBUST WEIGHT BAGS

Specifically designed to fit a standard 25kg bag of sand/ aggregate inside. They have two strong webbing bands each with four loops to either secure onto a tripod leg or attach a guy rope to when deploying a mast on hard ground – a set of 3 is recommended.



### MAST & TRIPOD CARRY BAGS

– Various sizes available

Formed from robust padded material these bags make transporting the mast easy and are also useful for protecting the mast during transport. Rigid flight cases also available to order.



Please contact us for more details

### AUXILLARY EQUIPMENT CARRY CASE WITH HARD BASE

For guys, stakes and accessories, keeps your accessories tidy. 600mm x 280mm x 200mm

Canvas ty



### OPEN CABLE CLEATS

These allow rapid installation of cables and retain them neatly against the side of the mast.

2 versions are available, 40mm Ø and 80mm Ø internal diameter – zinc plated



### GUY ROPES

Generally masts only need top section guys but for taller masts a 2nd or in some cases a 3rd set may be required.

Available in 9m, 12m, 15m, 21m, 30m

Example price 3 x 21m guys

Guying eyes – sold as a set

Kevlar and Stainless Steel guy ropes available



## MAST ACCESSORIES

### MAST LUBRICANT KIT

Comprising of 2 types of lubricant. One is a specifically formulated grease to lubricate all internal parts of the mast when servicing. The other is a restoration lubricant, formulated by TMS to provide a simple solution to re-grease the inside surfaces of an aluminium pneumatic telescopic mast without having to return it to the manufacturer or fully dismantle the mast. The restoration lubricant's unique chemical composition means that it can be used on almost any mast including those with a natural rubber air seals, as well as our masts which use synthetic rubber air seals. It is a cost effective remedy to rejuvenate your mast.



### TRIPOD SPREADER PLATE

Stainless steel or zinc plated plates useful for deploying tripods on soft ground. Comes as a set of 3.

Each plate weighs 750gms, 220mm x 160mm



### ANGULAR GROUND STAKES

Angular zinc coated steel stakes for securing guy ropes.

Set of 3 565mm, 750mm

Reinforced versions available up to 1.2m long.



### GROUND STAKE REMOVER

Designed to lever ground stakes out of soft ground with ease, comes with a spreader plate

Weight 6kg length 144cm



### TRIPOD STAKES

Angular zinc coated steel stakes for securing tripod legs and guy ropes - other sizes available

Set of 6 330mm

Set of 6 450mm reinforced version



### INTERNAL CABLES

We have a large range of internal spiralled cables with numerous cores and combinations of power/data/coax. These are not available for all masts. The cables terminate in a junction box at the mast base.



## MAST ACCESSORIES

### ANTI CLIMB SPIKE

Protects against malicious tampering and safeguards valuable head loads.

Example price for 101 Ø Mast -



### LOCKING CLAMP KNOB COVER

#### 1. 1m HEIGHT EXTENDER

Available in 1 metre or 1.5 metre lengths and enables you to gain that extra height, fabricated from strong stainless steel.

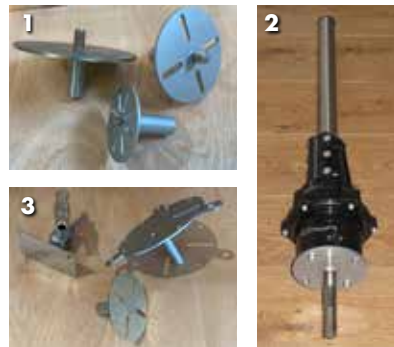
#### 2. ANTENNA ADAPTORS

We stock a range of quick release adaptors to fix your equipment, such as antennas and Wifi boosters. They are made from strong stainless steel and the standard protruding length is 300mm but special sizes can rapidly be produced – a simple drawing is required. We recommend using a rotating guying eye adaptor with antenna adaptors to allow you to rotate the mast for directional antennas whilst the guys remain static.



### SPECIAL MAST HEAD ADAPTERS

Our fabrications team can rapidly produce custom made adaptors for numerous types of specialist equipment. These are usually made from strong stainless steel. We can also manufacture adaptors for multiple devices. Intermediate adaptors can be attached on to the collars of a mast if required.



#### 1. 3D laser scanner adaptors

We fabricate mast adaptors for FARO, LYCA and all other laser scanners. Strong stainless steel.

#### 2. Yaesu rotator adaptor

#### 3. Pan, tilt & zoom camera adaptors with adjustable hole centre slots

## MAST ACCESSORIES

### MAST HEAD COVER WITH HAND PUMP COVER

Available for all masts, numerous sizes are available. It is used to protect the mast's top sections when the mast is retracted and not in use, or when the mast is being transported on vehicles either vertically or horizontally.

A pump cover for the integral hand pump is available.



### ANTI INGRESS/FROST/DUST PROTECTION SLEEVE

These can be used to protect the extended mast sections from rainwater/salt water entering the mast tubes or to stop the build up of ice on tubes and collars also to protect against dust/sand in desert conditions. Available for all diameter masts. They come in 2m, 3.5m and 5m lengths to allow fitting to differing tube lengths and to allow guying where required. Black as standard - Desert Sand and NATO Green available on request.

**Advisory note - Please be aware that these sleeves add to side loading (windage) and we advise that further guys may be necessary. Please talk to our sales team for more advice.**



### MAGNETIC LEVEL + 2 WAY SPIRIT LEVELS

1. Useful for levelling tripods, drive on and masts.
2. Integral spirit level for portable masts and Q Pods.



### LUMP HAMMER/RUBBER Mallet

Used for driving ground stakes into the ground. Rubber mallets, lump hammers and sledge hammers available.



## MILITARY MASTS



Among our growing customer base are many of the worlds military vehicle builders and system integrators

See us at DVD, DSEI, Milipol, Eurosatory and many other exhibitions in many countries.

## MILITARY MASTS

### DEPLOYED BY THE MILITARY WORLDWIDE

All of our masts carry the CE mark of quality and carry a 2-year guarantee as standard. Our masts and ancillary equipment has been in constant use with many of the world's military organisations for many years and as such have a proven track record for longevity and reliability. We have the capacity to supply large quantity orders due to our state of the art production methods and thorough testing in our quality control department prior to dispatch. Our collaborations with Italian mast manufacturer, Fireco, has brought together 50 years worth of experience in the industry, and our combination of skills has produced an outstanding and versatile organisation that is rapidly becoming a market leader in innovation and engineering within our sector.

### FULFILLING CUSTOMER REQUIREMENTS

Our mast systems are used for a wide variety of applications, such as tactical communications, radar and surveillance, thermal imaging, lightning deflection, rapid deployment and temporary and semi-permanent lighting. We have robust portable masts which come with numerous mounting solutions through to our keyed masts up to 340mm diameter which will carry up to an impressive 500kg head load. All of our masts are made from anodised aluminium. With tube wall thicknesses from 8mm and a minimum of 3mm this gives the masts huge strength. Our masts can be anodised in numerous colours including desert sand and military green. A wide range of spiralled internal cables can also be fitted.

We have over 3500 different types of masts available and we stock over 600 masts for rapid delivery.



# EMERGENCY SERVICE MASTS

## A PROVEN TRACK RECORD WORLDWIDE

We have a huge range of emergency service masts systems that are specifically designed for police, fire departments, search and rescue teams and a wide range of government departments. They are commonly used for incident lighting, video surveillance and communications.

Our mast systems have been in service with many of the worlds emergency services for decades and have a proven track record for strength, quality and reliability. All certificates for quality and conformity are available for procurement personnel. Part of the guarantee is a 15 year supply of spare parts and all masts come with a CE mark of quality and a 2-year product guarantee.

For systems integrators who build specialist emergency service and command and control vehicles, we offer significant discounts for large quantity orders. We actively look to form a long term working relationships with systems integrators who regularly buy emergency service masts.

A large range of portable rapid deployment options are available, from vehicle-mounted 'Through-Roof' style that extended and retracts vertically through the roof of a van, or 'On-Roof' roof masts that will deploy and stow in the horizontal position and can be operated either manually or electronically and be fitted with tilting and rotating lights giving the user full articulation if required.

**See pages 3-15 to view our Portable Mast ranges - currently in service with many of the world's emergency services**



# MAST RENTAL MADE EASY



MAST SIZES	MAX HEADLOAD WEIGHT	WEIGHT	TOP TUBE DIAMETER	CODE	WEEKLY HIRE				
					1	2	3	4	
1	7.3m Hiperpod Standard 45mm Ø 1.590m Retracted	3kg	7.5kg Inc. Integral Tripod	25mm	HP7-6	2 week min hire	£189.00	£252.00	£315.00
2	7.3m Hiperpod Premier 50mm Ø 1.73m Retracted	10kg	11.3kg Inc. Integral Tripod	25mm	HP7-7	2 week min hire	£262.50	£350.00	£437.50
3	5.25m Hiperpod Chrome 45mm Ø 1.46m Retracted	18kg	15kg	30mm	HPC		£189.00	£283.50	£378.00
4	6m 80mm Ø 1.460m Retracted	16kg	12kg	45mm	CO56-17		£210.00	£315.00	£420.00
5	5.9m 80mm Ø 1.810m Retracted	23kg	11.5kg	59mm	CO54-27		£196.00	£294.00	£392.00
6	6.0m 101mm Ø 1.460m Retracted	28kg	17.5kg	66mm	CM56-01		£222.00	£333.00	£444.00
7	6.0m 101mm Ø 1.810m Retracted	30kg	16kg	80mm	CM54-05		£238.00	£357.00	£476.00
8	7.5m 101mm Ø 1.575m Retracted	22kg	19.6kg	59mm	CM57-01		£222.00	£333.00	£444.00
9	10.5m 101mm Ø 1.700m Retracted	9kg	23.9kg	38mm	CM50-10		£229.00	£343.50	£458.00
10	10.496m 101mm Ø 2.075m Retracted	18kg	24.6kg	59mm	CM57-03		£226.00	£339.00	£452.00
11	12m 101mm Ø 2.130m Retracted	11kg	26.7kg	52mm	CM58-09		£238.00	£357.00	£476.00
12	12m 101mm Ø 1.850m Retracted	8kg	25.6kg	38mm	CM50-11		£260.00	£390.00	£520.00
13	14.5m 101mm Ø 2.150m Retracted	5kg	29.2kg	38mm	CM50-13		£249.00	£373.25	£498.00
14	17m 101mm Ø 2.80m Retracted	8kg	32.8kg	52mm	CM58-12		£243.00	£364.50	£486.00
15	18m 101mm Ø Trailer Mounted Mast System Other trailers are available	8kg	N/A	52mm	CM58-12		£459.00	£688.50	£918.00
16	Mounting Systems - Drive-On (12kg 880x270x215mm) - Tow Hitch (11kg 875x270x220mm) Tripods - C Pod (21kg 1490x160x190mm) - Q Pod S (13kg 1130x210x140mm) - Q Pod L (18kg 1470x210x140mm)						£66.00	£99.00	£132.00
17	Weight Bags (Set of 3) Please note that 6 bags may be required for taller masts						£12.00	£18.00	£24.00
18	3 x Tensionable Guy Ropes, 3 x Angular Ground Stakes, 6 x Tripod Stakes						£23.00	£34.50	£46.00
19	6 x Tensionable Gut Ropes, 3 x Angular Ground Stakes, 6 x Tripod Stakes						£36.00	£54.00	£72.00
20	Antenna Adapter						£12.00	£18.00	£24.00
21	12v 160ltr/min Compressor – Weight 6kg						£24.80	£37.20	£49.44

**Ex Demo/refurbished systems at significantly reduced prices are available.**

# (((T))) TOTALMAST SOLUTIONS (((T)))

## COMPANY PROFILE

Based in the heart of England, Total Mast Solutions have rapidly expanded and have a solid distributor network in many countries, supplying only top quality mast solutions to an increasing global customer base.

Ongoing new designs and development puts us at the forefront of our industry. We are constantly launching innovative and interesting solutions to meet our client's requirements. We have the capacity to rapidly supply lightweight and affordable portable masts with a range of mounting options through to our Giant 340mm Ø mast which reaches a staggering 40 metres for vehicle or other mounting applications.

Amongst our prestigious customer base are military, emergency services, photographers and videographers, plus various government organisations worldwide. Such high profile work has ensured we remain the world's premier supplier of pneumatic masts for hundreds of applications.



## ABOUT US

We manufacture an ever expanding range of over 3000 high quality, pneumatic, telescopic masts. Numerous base tube diameter sizes are available along with every conceivable extended and retracted size increment between 2m and 40m to suit any application.

We produce and consistently develop an extensive range of innovative mounting solutions and mast accessories, which can be tailored to suit your requirements.

Express worldwide delivery, quality and affordability are key to our company ethos.



**Rapid repairs and servicing or supply of spares is one of the reasons our customers choose to purchase from us**

**Call the Total Mast Solutions customer service team now on +44 (0) 1509 416972 to discuss how we can best help you.**  
[www.totalmastsolutions.com](http://www.totalmastsolutions.com) [sales@totalmastsolutions.com](mailto:sales@totalmastsolutions.com)



PRICES ARE EXCLUSIVE OF VAT. ALL MAJOR CREDIT CARDS ACCEPTED. PLEASE NOTE THAT PRICES AND PRODUCTS ARE CORRECT AT THE TIME OF PUBLICATION AND ARE SUBJECT TO CHANGE WITHOUT WRITTEN CONFIRMATION. PLEASE CALL OR EMAIL FOR UP-TO-DATE PRICES. PLEASE SEE OUR TERMS AND CONDITIONS OF SALE AND HIRE